



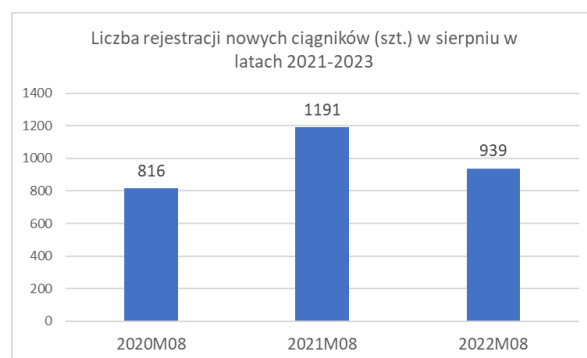
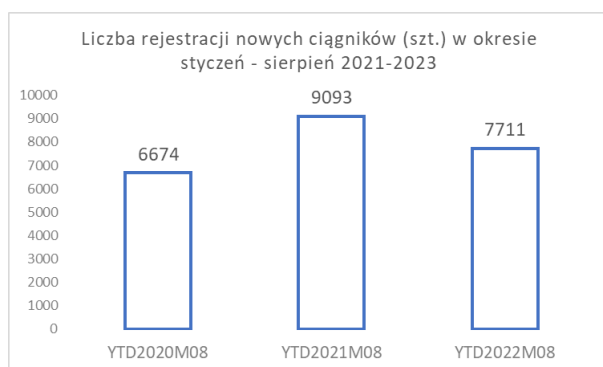
POLSKA IZBA GOSPODARCZA
MASZYN I URZĄDZEN ROLNICZYCH

**Sprzedż ciągników rolniczych w Polsce wg danych CEPIK
sierpień 2022**

Sprzedaż ciągników w Polsce według danych z CEPIK

Rynek ciągników nowych.

W sierpniu br. zarejestrowano 939 szt. nowych ciągników. To znaczący spadek w stosunku do poprzedniego miesiąca, kiedy zarejestrowano 1174 nowe ciągniki. W sumie od początku roku zarejestrowano 7711 szt. nowych ciągników i jest to gorszy wynik niż w analogicznym okresie 2021 roku o 1382 szt. Spadek rejestracji rok do roku to już 15,2 %.



Najpopularniejsze marki.

Liderem rynku po ośmiu miesiącach roku jest marka **New Holland** z 1279 rejestracjami. To o 447 szt. mniej niż rok wcześniej. Udziały marki New Holland w okresie styczeń-sierpień br. to 16,6%.

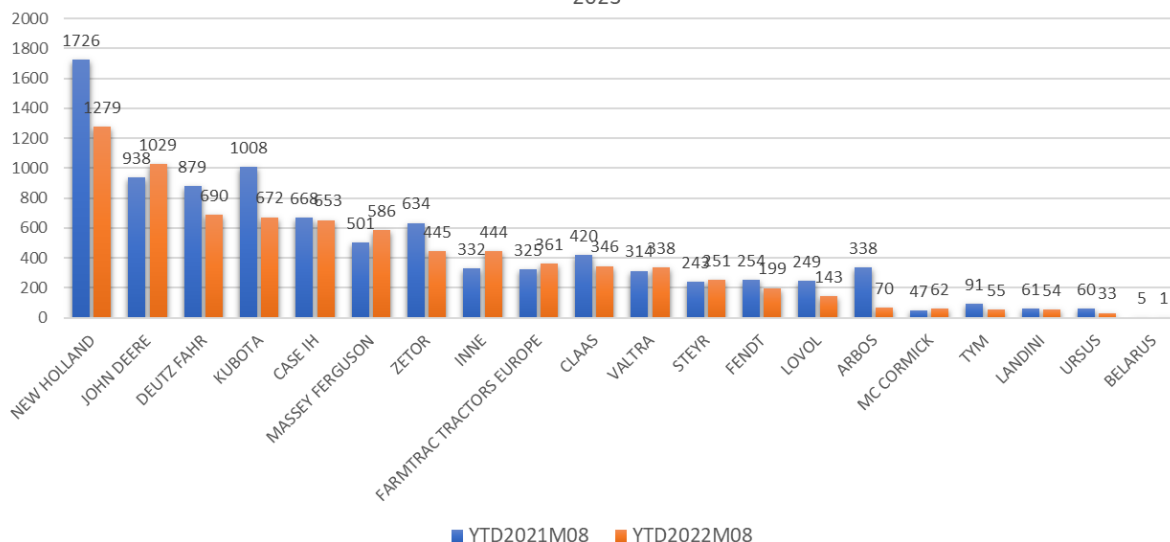
Marka **John Deere** z ilością 1029 szt. zajmuje drugie miejsce. To o 91 szt. więcej niż w 2021 roku. Udziały rynkowe John Deere to 13,3%.

Marka **Deutz Fahr** awansuje na trzecie miejsce i notuje 690 szt. zarejestrowanych maszyn. To 189 szt., mniej niż rok wcześniej. Udziały tej marki po ośmiu miesiącach roku wynoszą 8,9%

Na czwartym miejscu tym razem znajduje się marka **Kubota**. 672 szt. zarejestrowanych ciągników, to o 336 szt. mniej niż przed rokiem. Kubota osiąga 8,7 % udziałów rynkowych.

Case IH zajmuje piątą pozycję z ilością 653 szt. (15 szt. mniej niż w 2021 r). Udziały tej marki po ośmiu miesiącach 2022 roku to 8,5%.

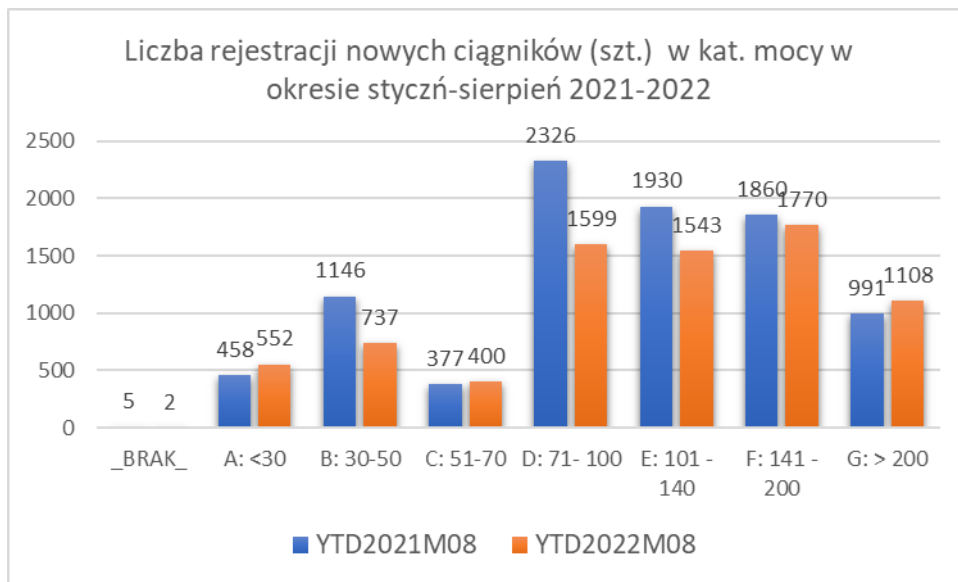
Liczba rejestracji nowych ciągników (szt.) z podziałem na marki w okresie styczeń-sierpień 2022-2023



| TOPMARKA | YTD2021M08 | udział % | YTD2022M08 | udział % | zmiana szt. | zmiana pp | zmiana % |
|--------------------------|------------|----------|------------|----------|-------------|-----------|----------|
| NEW HOLLAND | 1726 | 19,0% | 1279 | 16,6% | -447 | -2,4% | -25,9% |
| JOHN DEERE | 938 | 10,3% | 1029 | 13,3% | 91 | 3,0% | 9,7% |
| DEUTZ FAHR | 879 | 9,7% | 690 | 8,9% | -189 | -0,7% | -21,5% |
| KUBOTA | 1008 | 11,1% | 672 | 8,7% | -336 | -2,4% | -33,3% |
| CASE IH | 668 | 7,3% | 653 | 8,5% | -15 | 1,1% | -2,2% |
| MASSEY FERGUSON | 501 | 5,5% | 586 | 7,6% | 85 | 2,1% | 17,0% |
| ZETOR | 634 | 7,0% | 445 | 5,8% | -189 | -1,2% | -29,8% |
| INNE | 332 | 3,7% | 444 | 5,8% | 112 | 2,1% | 33,7% |
| FARMTRAC TRACTORS EUROPE | 325 | 3,6% | 361 | 4,7% | 36 | 1,1% | 11,1% |
| CLAAS | 420 | 4,6% | 346 | 4,5% | -74 | -0,1% | -17,6% |
| VALTRA | 314 | 3,5% | 338 | 4,4% | 24 | 0,9% | 7,6% |
| STEYR | 243 | 2,7% | 251 | 3,3% | 8 | 0,6% | 3,3% |
| FENDT | 254 | 2,8% | 199 | 2,6% | -55 | -0,2% | -21,7% |
| LOVOL | 249 | 2,7% | 143 | 1,9% | -106 | -0,9% | -42,6% |
| ARBOS | 338 | 3,7% | 70 | 0,9% | -268 | -2,8% | -79,3% |
| MC CORMICK | 47 | 0,5% | 62 | 0,8% | 15 | 0,3% | 31,9% |
| TYM | 91 | 1,0% | 55 | 0,7% | -36 | -0,3% | -39,6% |
| LANDINI | 61 | 0,7% | 54 | 0,7% | -7 | 0,0% | -11,5% |
| URSUS | 60 | 0,7% | 33 | 0,4% | -27 | -0,2% | -45,0% |
| BELARUS | 5 | 0,1% | 1 | 0,0% | -4 | 0,0% | -80,0% |
| | 9093 | | 7711 | | -1382 | | -15,2% |

Poniższa tabela prezentuje ilość rejestracji oraz udziały rynkowe w poszczególnych kategoriach mocy. Kolorem zielonym zaznaczono liderów w danych kategoriach. Po ośmiu miesiącach 2022 roku liderem w najniższej kategoriach mocy do 30 KM jest marka Kubota. W kat. 30-50 KM liderem jest Farmtrac Tractors, ale tylko o 1 szt. wyprzedza Kubotę. W kategorii 51-100 KM liderem jest New Holland. W kat. 101 -140 KM pierwsze miejsce zajmuje marka Deutz Fahr, a kategoriach powyżej 140 KM John Deere.

| LICZBA REJESTRACJI NOWYCH CIĄGNIKÓW (SZT.) Z PODZIAŁEM NA MARKI W KAT. MOCY W OKRESIE STYCZEŃ-SIERPIEŃ 2023 | | | | | | | | | | | | | | | |
|---|------|--------|----------|----------|----------|----------|----------|------------|----------|--------------|----------|--------------|----------|----------|----------|
| TOPMARKA | BRAK | A: <30 | udział % | B: 30-50 | udział % | C: 51-70 | udział % | D: 71- 100 | udział % | E: 101 - 140 | udział % | F: 141 - 200 | udział % | G: > 200 | udział % |
| ARBOS | | 8 | 1,4% | 47 | 6,4% | 1 | 0,3% | 5 | 0,3% | 9 | 0,6% | | | | |
| BELARUS | | | | | | | | 1 | 0,1% | | | | | | |
| CASE IH | | | | | | 2 | 0,5% | 163 | 10,2% | 103 | 6,7% | 266 | 15,0% | 119 | 10,7% |
| CLAAS | | | | | | | | 17 | 1,1% | 115 | 7,5% | 101 | 5,7% | 113 | 10,2% |
| DEUTZ FAHR | | | | | | 96 | 24,0% | 229 | 14,3% | 263 | 17,0% | 66 | 3,7% | 36 | 3,2% |
| FARMTRAC TRACTORS EUROPE | | 134 | 24,3% | 151 | 20,5% | | | 60 | 3,8% | 16 | 1,0% | | | | |
| FENDT | | | | | | | | 10 | 0,6% | 40 | 2,6% | 53 | 3,0% | 96 | 8,7% |
| INNE | 1 | 207 | 37,5% | 170 | 23,1% | 18 | 4,5% | 29 | 1,8% | 9 | 0,6% | 2 | 0,1% | 8 | 0,7% |
| JOHN DEERE | | 12 | 2,2% | 30 | 4,1% | 22 | 5,5% | 103 | 6,4% | 167 | 10,8% | 429 | 24,2% | 266 | 24,0% |
| KUBOTA | | 164 | 29,7% | 150 | 20,4% | 46 | 11,5% | 118 | 7,4% | 76 | 4,9% | 118 | 6,7% | | |
| LANDINI | | | | 2 | 0,3% | 19 | 4,8% | 29 | 1,8% | 3 | 0,2% | | | 1 | 0,1% |
| LOVOL | | 8 | 1,4% | 133 | 18,0% | 1 | 0,3% | 1 | 0,1% | | 0,0% | | | | 0,0% |
| MASSEY FERGUSON | | | | 1 | 0,1% | 1 | 0,3% | 95 | 5,9% | 237 | 15,4% | 123 | 6,9% | 129 | 11,6% |
| MC CORMICK | | | | 5 | 0,7% | 5 | 1,3% | 35 | 2,2% | 6 | 0,4% | 4 | 0,2% | 7 | 0,6% |
| NEW HOLLAND | | 4 | 0,7% | 23 | 3,1% | 151 | 37,8% | 364 | 22,8% | 238 | 15,4% | 380 | 21,5% | 119 | 10,7% |
| STEYR | | | | | | 12 | 3,0% | 52 | 3,3% | 36 | 2,3% | 98 | 5,5% | 53 | 4,8% |
| TYM | | 11 | 2,0% | 18 | 2,4% | 19 | 4,8% | 2 | 0,1% | 5 | 0,3% | | | | |
| URSUS | 1 | | | 7 | 0,9% | 7 | 1,8% | 5 | 0,3% | 6 | 0,4% | 7 | 0,4% | | |
| VALTRA | | | | | | | | 5 | 0,3% | 67 | 4,3% | 105 | 5,9% | 161 | 14,5% |
| ZETOR | | 4 | 0,7% | | | | | 276 | 17,3% | 147 | 9,5% | 18 | 1,0% | | |
| | 2 | 552 | | 737 | | 400 | | 1599 | | 1543 | | 1770 | | 1108 | |



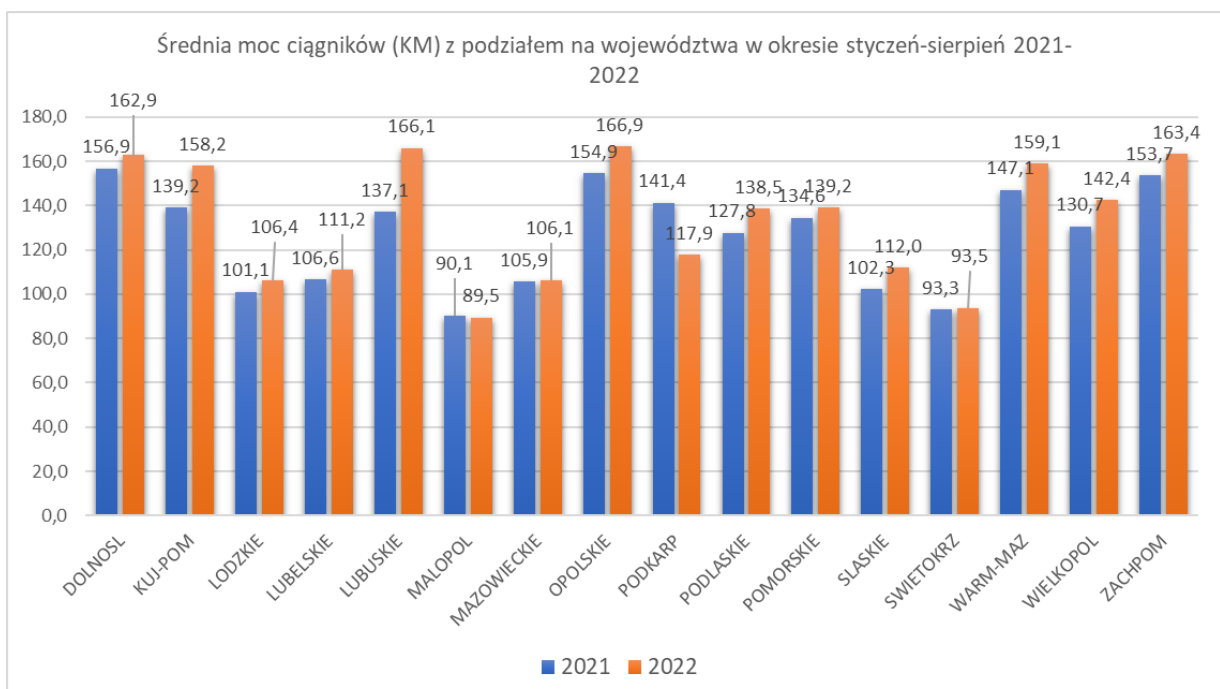
Rejestracje ciągników nowych pochodzenia zagranicznego

Poniższe zestawienie prezentuje rejestracje ciągników nowych krajowych i sprowadzonych z zagranicy w okresie styczeń-sierpień 2022. Najistotniejszym elementem tego zestawienia jest ilość ciągników marki Belarus.

| POCHODZENIE | ARBOS | BELARUS | CASE IH | CLAAS | DEUTZ FAHR | FARMTRACTRACTORS EUROPE | FENDT | INNE | JOHN DEERE | KUBOTA | LANDINI | LOVOL | MASSEY FERGLISON | MCCORMICK | NEW HOLLAND | STEYR | TYM | URSUS | VALTRA | ZETOR |
|-------------|-------|---------|---------|-------|------------|-------------------------|-------|------|------------|--------|---------|-------|------------------|-----------|-------------|-------|-----|-------|--------|-------|
| KRAJ | 70 | 1 | 653 | 346 | 690 | 361 | 199 | 444 | 1029 | 672 | 54 | 143 | 586 | 62 | 1279 | 251 | 55 | 33 | 338 | 445 |
| ZAGRANICA | 17 | 831 | 24 | 10 | 8 | | 6 | 121 | 9 | 6 | | 14 | 21 | | 2 | 1 | | | 1 | |

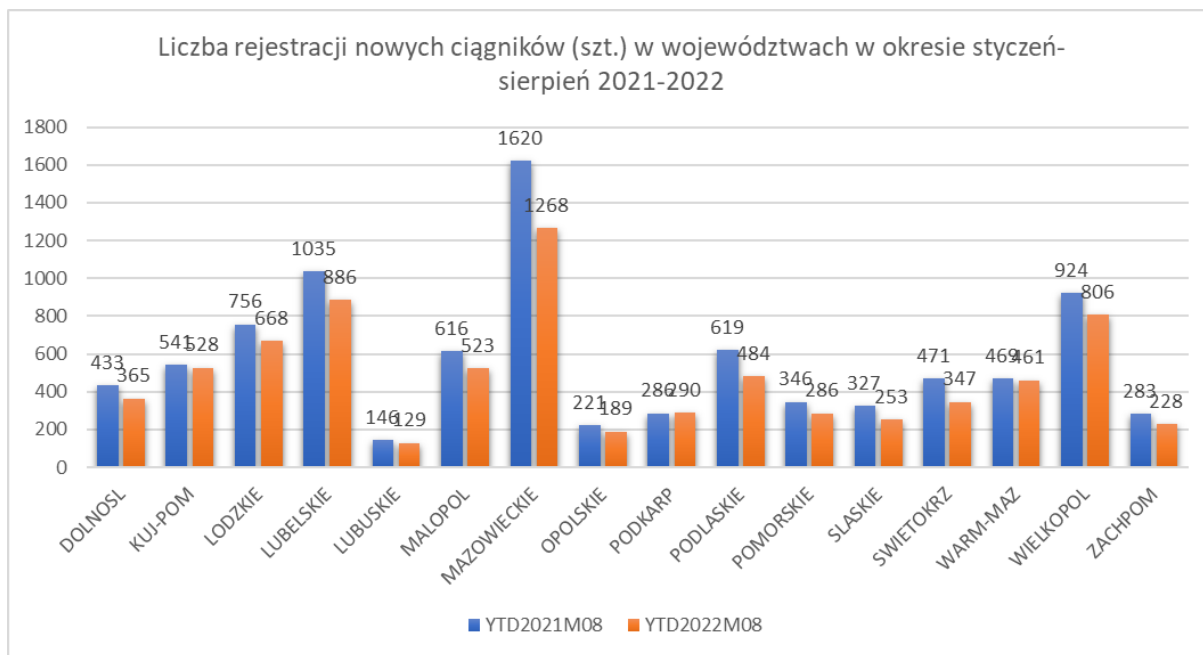
Średnia moc

Średnia moc ciągników nowo rejestrowanych po ośmiu miesiącach br. była najwyższa w województwie opolskim i wynosiła 166,9 KM. Średnią 166,1 KM notujemy w lubuskim. Ciągniki o najniższej mocy (średnia – 89,5 KM) rejestrowane są w województwie małopolskim.



Województwa i powiaty

Po ośmiu miesiącach roku województwo mazowieckie jest liderem, jeżeli chodzi o ilość rejestracji nowych ciągników. W regionie tym zarejestrowano 1268 szt. nowych ciągników, to o 352 szt. mniej niż przed rokiem. Na drugim miejscu znajduje się województwo lubelskie z ilością 886 szt., kolejne to wielkopolskie z ilością 806 szt.



Analiza geograficzna w rozbiciu na marki

Poniższe tabele przedstawiają sprzedaż ciągników z podziałem na marki w poszczególnych powiatach w okresie styczeń-sierpień 2022 roku.

| WOJEWODZTWO | POWIAT | ARBOS | BELARUS | CASE IH | CLAAS | DEUTZ FAHR | FARMTRAC TRACTORS EUROPE | FENDT | INNE | JOHN DEERE | KUBOTA | LANDINI | LOYOL | MASSEY FERGUSON | MC CORMICK | NEW HOLLAND | STEYR | TYM | URSUS | VALTRA | ZETOR |
|-----------------------|-----------------|----------|----------|-----------|-----------|------------|--------------------------|-----------|-----------|------------|-----------|----------|----------|-----------------|------------|-------------|-----------|----------|----------|-----------|-----------|
| PODLASKIE | AUGUSTOW | | | 2 | | 1 | 1 | 1 | | 1 | 1 | | | 1 | | 5 | 1 | 1 | | 1 | 2 |
| PODLASKIE | BIALYSTOK_A | | | 1 | 5 | 5 | 1 | 2 | 2 | 7 | 2 | | | 1 | | 10 | | | | 5 | 3 |
| PODLASKIE | BIALYSTOK_M | | | 2 | 2 | | 5 | 1 | 3 | 2 | 2 | | | 1 | | 3 | | | | | 2 |
| PODLASKIE | BIELSK_PODL | | | 2 | 3 | 1 | 1 | 2 | 2 | 3 | 1 | | | 2 | | 7 | | | | 6 | 2 |
| PODLASKIE | GRAJEWO | | | 7 | 1 | | 1 | 1 | | 4 | 4 | | | 8 | | 11 | 2 | | | 5 | 4 |
| PODLASKIE | HAJNOWKA | 1 | | | | 1 | 1 | 1 | 1 | 1 | 4 | | | | | | | | | | |
| PODLASKIE | KOLNO | | | 17 | 3 | 4 | 3 | | 1 | 3 | 2 | | | 3 | 1 | 10 | 1 | | | 6 | 3 |
| PODLASKIE | LOMZA_A | | | 13 | | 8 | 2 | 5 | 1 | 4 | 1 | | | 6 | | 7 | | | | 5 | 1 |
| PODLASKIE | LOMZA_M | | | 1 | | 1 | | 1 | | | 1 | | | | | | | | | | |
| PODLASKIE | MONKI | | | 3 | 1 | 6 | 1 | | | 3 | 1 | | | 1 | | 5 | 2 | | | 1 | 2 |
| PODLASKIE | SEJNY | | 1 | 2 | | | | 1 | 2 | 2 | 3 | | | 3 | | 2 | | | 1 | 1 | |
| PODLASKIE | SIEMIATYCZE | | | | 3 | 3 | | | 3 | 6 | 1 | | | 1 | | 5 | | | | 1 | 1 |
| PODLASKIE | SOKOLKA | | | 1 | 2 | 2 | 3 | 2 | | 4 | 3 | | | 3 | | 4 | 2 | | | | 1 |
| PODLASKIE | SUWALKI_A | | | 3 | 6 | 2 | 2 | | 1 | 1 | 3 | | 1 | 2 | | 9 | | | | | 1 |
| PODLASKIE | SUWALKI_M | | | | 1 | | 1 | | | | | | | | | 1 | | | | | |
| PODLASKIE | WYSOKIE_MAZ | | | 4 | | 4 | 1 | 2 | | 8 | 2 | | | 11 | | 13 | 2 | | | | 2 |
| PODLASKIE | ZAMBROW | 1 | | 1 | 1 | 2 | 1 | | | 3 | 4 | | | 3 | | 1 | | | | | 2 |
| PODLASKIE Suma | | 2 | 1 | 59 | 29 | 39 | 24 | 19 | 16 | 50 | 35 | 0 | 1 | 46 | 1 | 93 | 10 | 1 | 1 | 35 | 22 |
| POMORSKIE | BYTOW | | | | | 1 | 1 | | | 2 | | | | 1 | 1 | 3 | | | | 1 | 2 |
| POMORSKIE | CHOJNICE | 1 | | | 1 | | 2 | | 1 | 4 | 1 | | | 3 | | 1 | | | | 3 | |
| POMORSKIE | CZLUCHOW | | | | 2 | | | | | | | | | 2 | | 1 | | | | | |
| POMORSKIE | GDANSK_A | | | 8 | 1 | | 1 | | 2 | 2 | 2 | | | 1 | | 4 | | | | | |
| POMORSKIE | GDANSK_M | | | 1 | 1 | | 1 | | 1 | 6 | | | 1 | | | | | | | 1 | 3 |
| POMORSKIE | GDYNIA | | | 1 | | | | | | | 1 | | | | | | | 1 | | | 2 |
| POMORSKIE | KARTUZY | 1 | | 5 | 2 | 1 | | 1 | 2 | | 5 | | | 3 | | 1 | 1 | | | 1 | 1 |
| POMORSKIE | KOSCIERZYNA | | | | | | 3 | | | 4 | 1 | | | 3 | | 2 | 1 | | | 2 | |
| POMORSKIE | KWIDZYN | | | 1 | | | 1 | 1 | | 6 | 3 | | | 2 | | 1 | 3 | | | 1 | 6 |
| POMORSKIE | LEBORK | | | | 2 | 1 | 1 | | | 1 | | | | 1 | | 1 | | 1 | | 3 | |
| POMORSKIE | MALBORK | | | 5 | | | | | | 5 | | | | | | 3 | | | | | 1 |
| POMORSKIE | NOWY_DWOR_GD | | | 2 | | | | | | 4 | | | | 1 | | 2 | | | | | |
| POMORSKIE | PUCK | | | 4 | | 1 | 2 | | | | 1 | | | 1 | | | 1 | | | | |
| POMORSKIE | SLUPSK_A | | | 2 | 4 | 1 | 1 | 1 | | 6 | 3 | | | 6 | | 1 | | | | | |
| POMORSKIE | SLUPSK_M | | | | | | | | 5 | | | | | | | 4 | | | | | |
| POMORSKIE | SOPOT | | | | | | | | | | | | | | | | | | | | 1 |
| POMORSKIE | STAROGARD_GD | | | 4 | 1 | 2 | 2 | | 1 | 6 | 1 | | | | | | 2 | | | | 1 |
| POMORSKIE | SZTUM | | | 5 | 2 | 1 | 1 | | | 2 | | | | | | 4 | 1 | | | | |
| POMORSKIE | TCZEW | | | 2 | 1 | 1 | 1 | | 2 | 5 | 1 | | 1 | 1 | | 1 | 2 | | | | |
| POMORSKIE | WEJHEROWO | | | 4 | | | 1 | 1 | | 1 | 1 | 1 | | 1 | | 2 | | | | 1 | 1 |
| POMORSKIE Suma | | 2 | 0 | 44 | 17 | 9 | 18 | 4 | 14 | 53 | 20 | 1 | 2 | 26 | 1 | 31 | 11 | 2 | 0 | 14 | 17 |
| SLASKIE | BEDZIN | | | | | | | | | 1 | | | | 1 | | | | | | | |
| SLASKIE | BIELSKO_BIALA_A | | | | 1 | 1 | | | 2 | | 2 | | | 1 | | 2 | | | | | 1 |
| SLASKIE | BIELSKO_BIALA_M | | | 1 | | | | | | | 7 | | | 2 | | 2 | | | | 2 | |
| SLASKIE | BIERUN | | | 2 | | | | | | 1 | | | 1 | | | 2 | | | | | 1 |
| SLASKIE | CIESZYN | | | 2 | | 3 | | 1 | 2 | 4 | 3 | | | 1 | | 1 | | | | | 1 |
| SLASKIE | CZESTOCHOWA_A | 1 | | 2 | | 4 | 1 | 2 | | 6 | 1 | | | | | 3 | 1 | | | 3 | 2 |
| SLASKIE | CZESTOCHOWA_M | | | | 1 | | | 1 | 1 | 1 | 1 | | | | | 1 | | | | 7 | 4 |
| SLASKIE | DABROWA_G | | | | | | | | 1 | | 1 | | | | | | | | | | |
| SLASKIE | GLIWICE_A | | | | | | | 1 | | | | | | 1 | 1 | | | | | | |
| SLASKIE | GLIWICE_M | | | | | | 1 | | | | | | | | | | | 1 | | | |
| SLASKIE | JASTRZEBIE_ZDR | | | | | | | | | | | | | | | | | | | | |
| SLASKIE | KATOWICE | | | 2 | | 1 | 1 | 1 | 3 | 1 | 7 | | | | | 1 | | | | | 1 |
| SLASKIE | KLOBUCK | | | 1 | | 1 | 1 | | 2 | 2 | | | | | | 3 | | 1 | | | 1 |
| SLASKIE | LUBLINIEC | | | | | | | | 1 | 1 | | | | | | | | | | | 1 |
| SLASKIE | MIKOLOW | | | | | 1 | | | 1 | 1 | | | | 1 | | | | | | | |
| SLASKIE | MYSLOWICE | | | | | | | | | | | | | | | | | | | | |
| SLASKIE | MYSZKOW | | | 1 | | | | 1 | 1 | 1 | 1 | | | | | 1 | | | | | 2 |
| SLASKIE | PSZCZYNA | | | 3 | 6 | 2 | | | | | | | | 1 | | 2 | 1 | | | 1 | 1 |
| SLASKIE | RACIBORZ | | | 2 | 2 | 1 | | 2 | | 4 | 2 | | | 3 | | 1 | | | | 2 | 2 |
| SLASKIE | RUDA_SL | | | | | | | | | | | | | | | | | | | | 1 |
| SLASKIE | RYBNIK_A | | | | | | | | | | | | | | | | | 1 | | | |
| SLASKIE | RYBNIK_M | | | | | | | | 2 | | | | 2 | | | | | | 1 | | |
| SLASKIE | TARNOWSKIE_GORY | | | 1 | | | | | 1 | 1 | | | | 1 | | | | | | | 1 |
| SLASKIE | TYCHY | | | 1 | 1 | 1 | 1 | | 1 | 3 | 1 | | | | | | | 1 | | | |
| SLASKIE | WODZISLAW_SL | | | | | | | | | 2 | | | | | | 1 | | | | | 2 |
| SLASKIE | ZAWIERCIE | 1 | | | | 6 | 2 | 2 | | 6 | 1 | | | 1 | | 2 | 2 | | | 2 | 3 |
| SLASKIE | ZORY | | | | | | | | | 1 | | | | | | | | | | | |
| SLASKIE | ZYWIEC | | | 2 | | 1 | | | 2 | | 2 | | 1 | | | | | | | | 2 |
| SLASKIE Suma | | 2 | 0 | 20 | 11 | 22 | 7 | 11 | 20 | 32 | 32 | 0 | 4 | 15 | 1 | 23 | 4 | 4 | 1 | 19 | 25 |

Analiza geograficzna w rozbiściu na marki

Poniższa tabela przedstawia sprzedaż poszczególnych marek ciągników w województwach i obrazuje strukturę sprzedaży poszczególnych marek w regionach po ośmiu miesiącach 2022 roku.

| WOJEWÓDZTWO | ARBOS | BELARUS | CASE IH | CLAAS | DEUTZ FAHR | FARMTRAC TRACTORS EUROPE | FENDT | INNE | JOHN DEERE | KUBOTA | LANDINI | LOVOL | MASSEY FERGUSON | MCCORMICK | NEW HOLLAND | STEYR | TYM | URSUS | VALTRA | ZETOR |
|-------------|-------|---------|---------|-------|------------|--------------------------|-------|------|------------|--------|---------|-------|-----------------|-----------|-------------|-------|-----|-------|--------|-------|
| DOLNOSL | 1 | | 54 | 17 | 27 | 2 | 8 | 22 | 65 | 31 | 1 | | 24 | 8 | 61 | 4 | 4 | 3 | 17 | 16 |
| KUJ-POM | 4 | | 35 | 25 | 29 | 13 | 9 | 4 | 150 | 26 | 1 | 3 | 29 | 4 | 116 | 14 | 3 | 2 | 32 | 29 |
| LODZKIE | 5 | | 43 | 16 | 57 | 39 | 12 | 63 | 75 | 50 | 17 | 9 | 47 | 7 | 143 | 27 | 6 | 2 | 19 | 31 |
| LUBELSKIE | 11 | | 72 | 32 | 78 | 52 | 18 | 52 | 92 | 76 | 7 | 22 | 79 | 10 | 169 | 47 | 9 | 3 | 30 | 27 |
| LUBUSKIE | 1 | | 15 | 13 | 17 | 5 | 11 | 7 | 12 | 8 | | | 7 | | 11 | | | | 16 | 6 |
| MALOPOL | 7 | | 29 | 18 | 65 | 30 | 8 | 46 | 33 | 60 | 5 | 27 | 39 | | 77 | 12 | 5 | 3 | 18 | 41 |
| MAZOWIECKIE | 10 | | 71 | 42 | 141 | 78 | 36 | 110 | 82 | 157 | 19 | 36 | 86 | 11 | 232 | 29 | 8 | 4 | 46 | 70 |
| OPOLSKIE | 1 | | 25 | 17 | 6 | 5 | 10 | 5 | 29 | 13 | | | 17 | | 26 | 16 | | 1 | 7 | 11 |
| PODKARP | 12 | | 15 | 4 | 38 | 25 | 2 | 19 | 59 | 13 | | 10 | 13 | 7 | 19 | 14 | 5 | 4 | 6 | 25 |
| PODLASKIE | 2 | 1 | 59 | 29 | 39 | 24 | 19 | 16 | 50 | 35 | | 1 | 46 | 1 | 93 | 10 | 1 | 1 | 35 | 22 |
| POMORSKIE | 2 | | 44 | 17 | 9 | 18 | 4 | 14 | 53 | 20 | 1 | 2 | 26 | 1 | 31 | 11 | 2 | | 14 | 17 |
| SLASKIE | 2 | | 20 | 11 | 22 | 7 | 11 | 20 | 32 | 32 | | 4 | 15 | 1 | 23 | 4 | 4 | 1 | 19 | 25 |
| SWIETOKRZ | 3 | | 25 | 11 | 59 | 15 | 5 | 22 | 18 | 24 | 1 | 21 | 44 | 5 | 41 | 14 | 2 | 5 | 12 | 20 |
| WARM-MAZ | 1 | | 70 | 29 | 26 | 20 | 8 | 13 | 114 | 35 | 1 | 3 | 36 | 2 | 43 | 23 | 2 | | 13 | 22 |
| WIELKOPOL | 8 | | 46 | 50 | 48 | 20 | 35 | 24 | 141 | 69 | 1 | 5 | 72 | 5 | 143 | 25 | 4 | 4 | 38 | 68 |
| ZACHPOM | | | 30 | 15 | 29 | 8 | 3 | 7 | 24 | 23 | | | 6 | | 51 | 1 | | | 16 | 15 |
| SUMA | 70 | 1 | 653 | 346 | 690 | 361 | 199 | 444 | 1029 | 672 | 54 | 143 | 586 | 62 | 1279 | 251 | 55 | 33 | 338 | 445 |

Poniższe tabele przedstawiają rejestracje ciągników nowych w województwach dla poszczególnych marek z podziałem na kategorie mocy w okresie styczeń-sierpień 2022 roku.

| TOPMARKA | WOJEWÓDZTWO | BRAK | A: <30 | B: 30-50 | C: 51-70 | D: 71- 100 | E: 101 - 140 | F: 141 - 200 | G: > 200 |
|---------------------|-------------|------|--------|----------|----------|------------|--------------|--------------|----------|
| ARBOS | DOLNOSL | | | 1 | | | | | |
| ARBOS | KUJ-POM | | 1 | 3 | | | | | |
| ARBOS | LODZKIE | | | 5 | | | | | |
| ARBOS | LUBELSKIE | | 2 | 8 | | 1 | | | |
| ARBOS | LUBUSKIE | | | 1 | | | | | |
| ARBOS | MALOPOL | | 2 | 5 | | | | | |
| ARBOS | MAZOWIECKIE | | 1 | 8 | | 1 | | | |
| ARBOS | OPOLSKIE | | | 1 | | | | | |
| ARBOS | PODKARP | | 1 | 2 | | | 9 | | |
| ARBOS | PODLASKIE | | | 2 | | | | | |
| ARBOS | POMORSKIE | | | 1 | | 1 | | | |
| ARBOS | SLASKIE | | | 2 | | | | | |
| ARBOS | SWIETOKRZ | | 1 | 2 | | | | | |
| ARBOS | WARM-MAZ | | | 1 | | | | | |
| ARBOS | WIELKOPOL | | | 5 | 1 | 2 | | | |
| ARBOS Suma | | 0 | 8 | 47 | 1 | 5 | 9 | 0 | 0 |
| BELARUS | PODLASKIE | | | | | 1 | | | |
| BELARUS Suma | | 0 | 0 | 0 | 0 | 1 | 0 | 0 | 0 |
| CASE IH | DOLNOSL | | | | | 4 | 2 | 23 | 25 |
| CASE IH | KUJ-POM | | | | | 5 | 8 | 16 | 6 |
| CASE IH | LODZKIE | | | | | 27 | 5 | 9 | 2 |
| CASE IH | LUBELSKIE | | | | 1 | 18 | 9 | 32 | 12 |
| CASE IH | LUBUSKIE | | | | | 2 | 2 | 9 | 2 |
| CASE IH | MALOPOL | | | | | 18 | 3 | 8 | |
| CASE IH | MAZOWIECKIE | | | | | 24 | 14 | 25 | 8 |
| CASE IH | OPOLSKIE | | | | | 4 | 3 | 13 | 5 |
| CASE IH | PODKARP | | | | | 6 | 1 | 5 | 3 |
| CASE IH | PODLASKIE | | | | | 13 | 19 | 24 | 3 |
| CASE IH | POMORSKIE | | | | | 9 | 8 | 16 | 11 |
| CASE IH | SLASKIE | | | | | 6 | 7 | 6 | 1 |
| CASE IH | SWIETOKRZ | | | | 1 | 12 | 2 | 8 | 2 |
| CASE IH | WARM-MAZ | | | | | 4 | 6 | 39 | 21 |
| CASE IH | WIELKOPOL | | | | | 8 | 10 | 21 | 7 |
| CASE IH | ZACHPOM | | | | | 3 | 4 | 12 | 11 |
| CASE IH Suma | | 0 | 0 | 0 | 2 | 163 | 103 | 266 | 119 |

| TOPMARKA | WOJEWODZTWO | BRAK | A: <30 | B: 30-50 | C: 51-70 | D: 71- 100 | E: 101 - 140 | F: 141 - 200 | G: > 200 |
|--------------------------------------|-------------|------|--------|----------|----------|------------|--------------|--------------|----------|
| CLAAS | DOLNOSL | | | | | | 6 | 5 | 6 |
| CLAAS | KUJ-POM | | | | | | 11 | 7 | 7 |
| CLAAS | LODZKIE | | | | | | 7 | 6 | 3 |
| CLAAS | LUBELSKIE | | | | | 1 | 9 | 12 | 10 |
| CLAAS | LUBUSKIE | | | | | 1 | 2 | 3 | 7 |
| CLAAS | MALOPOL | | | | | 1 | 6 | 3 | 8 |
| CLAAS | MAZOWIECKIE | | | | | 3 | 13 | 12 | 14 |
| CLAAS | OPOLSKIE | | | | | | 4 | 6 | 7 |
| CLAAS | PODKARP | | | | | | 3 | 1 | |
| CLAAS | PODLASKIE | | | | | 3 | 8 | 11 | 7 |
| CLAAS | POMORSKIE | | | | | 2 | 5 | 4 | 6 |
| CLAAS | SLASKIE | | | | | | 5 | 4 | 2 |
| CLAAS | SWIETOKRZ | | | | | 2 | 2 | 6 | 1 |
| CLAAS | WARM-MAZ | | | | | | 13 | 5 | 11 |
| CLAAS | WIELKOPOL | | | | | 4 | 15 | 15 | 16 |
| CLAAS | ZACHPOM | | | | | | 6 | 1 | 8 |
| CLAAS Suma | | 0 | 0 | 0 | 0 | 17 | 115 | 101 | 113 |
| DEUTZ FAHR | DOLNOSL | | | | | 1 | 6 | 13 | 7 |
| DEUTZ FAHR | KUJ-POM | | | | | 1 | 7 | 10 | 5 |
| DEUTZ FAHR | LODZKIE | | | | | 10 | 17 | 23 | 6 |
| DEUTZ FAHR | LUBELSKIE | | | | | 13 | 27 | 29 | 7 |
| DEUTZ FAHR | LUBUSKIE | | | | | 1 | 2 | 10 | 3 |
| DEUTZ FAHR | MALOPOL | | | | | 8 | 34 | 22 | 1 |
| DEUTZ FAHR | MAZOWIECKIE | | | | | 32 | 63 | 39 | 5 |
| DEUTZ FAHR | OPOLSKIE | | | | | | | 4 | 2 |
| DEUTZ FAHR | PODKARP | | | | | 5 | 11 | 16 | 3 |
| DEUTZ FAHR | PODLASKIE | | | | | 2 | 8 | 19 | 4 |
| DEUTZ FAHR | POMORSKIE | | | | | | 2 | 2 | 3 |
| DEUTZ FAHR | SLASKIE | | | | | 4 | 7 | 8 | 3 |
| DEUTZ FAHR | SWIETOKRZ | | | | | 15 | 31 | 9 | 3 |
| DEUTZ FAHR | WARM-MAZ | | | | | 2 | 3 | 17 | 4 |
| DEUTZ FAHR | WIELKOPOL | | | | | 2 | 9 | 26 | 7 |
| DEUTZ FAHR | ZACHPOM | | | | | | 2 | 16 | 4 |
| DEUTZ FAHR Suma | | 0 | 0 | 0 | 96 | 229 | 263 | 66 | 36 |
| FARMTRAC TRACTORS EUROPE | DOLNOSL | | 1 | 1 | | | | | |
| FARMTRAC TRACTORS EUROPE | KUJ-POM | | 4 | 7 | | 2 | | | |
| FARMTRAC TRACTORS EUROPE | LODZKIE | | 7 | 22 | | 7 | 3 | | |
| FARMTRAC TRACTORS EUROPE | LUBELSKIE | | 23 | 25 | | 3 | 1 | | |
| FARMTRAC TRACTORS EUROPE | LUBUSKIE | | 3 | 1 | | | 1 | | |
| FARMTRAC TRACTORS EUROPE | MALOPOL | | 15 | 11 | | 4 | | | |
| FARMTRAC TRACTORS EUROPE | MAZOWIECKIE | | 27 | 32 | | 15 | 4 | | |
| FARMTRAC TRACTORS EUROPE | OPOLSKIE | | 1 | 2 | | 2 | | | |
| FARMTRAC TRACTORS EUROPE | PODKARP | | 7 | 9 | | 8 | 1 | | |
| FARMTRAC TRACTORS EUROPE | PODLASKIE | | 8 | 10 | | 6 | | | |
| FARMTRAC TRACTORS EUROPE | POMORSKIE | | 4 | 11 | | 3 | | | |
| FARMTRAC TRACTORS EUROPE | SLASKIE | | 3 | 3 | | | 1 | | |
| FARMTRAC TRACTORS EUROPE | SWIETOKRZ | | 7 | 5 | | 2 | 1 | | |
| FARMTRAC TRACTORS EUROPE | WARM-MAZ | | 9 | 6 | | 3 | 2 | | |
| FARMTRAC TRACTORS EUROPE | WIELKOPOL | | 11 | 4 | | 4 | 1 | | |
| FARMTRAC TRACTORS EUROPE | ZACHPOM | | 4 | 2 | | 1 | 1 | | |
| FARMTRAC TRACTORS EUROPE Suma | | 0 | 134 | 151 | 0 | 60 | 16 | 0 | 0 |
| FENDT | DOLNOSL | | | | | | 1 | 2 | 5 |
| FENDT | KUJ-POM | | | | | | | 5 | 4 |
| FENDT | LODZKIE | | | | | 1 | 5 | 4 | 2 |
| FENDT | LUBELSKIE | | | | | 3 | 9 | 3 | 3 |
| FENDT | LUBUSKIE | | | | | 1 | 1 | 1 | 8 |
| FENDT | MALOPOL | | | | | | | 1 | 7 |
| FENDT | MAZOWIECKIE | | | | | 2 | 7 | 4 | 23 |
| FENDT | OPOLSKIE | | | | | | 2 | 5 | 3 |
| FENDT | PODKARP | | | | | | | 1 | 1 |
| FENDT | PODLASKIE | | | | | | 1 | 5 | 13 |
| FENDT | POMORSKIE | | | | | | 2 | | 2 |
| FENDT | SLASKIE | | | | | | 3 | 4 | 4 |
| FENDT | SWIETOKRZ | | | | | | 2 | 2 | 1 |
| FENDT | WARM-MAZ | | | | | | | 1 | 7 |
| FENDT | WIELKOPOL | | | | | 3 | 7 | 14 | 11 |
| FENDT | ZACHPOM | | | | | | | 1 | 2 |
| FENDT Suma | | 0 | 0 | 0 | 0 | 10 | 40 | 53 | 96 |

| TOPMARKA | WOJEWODZTWO | BRAK | A: <30 | B: 30-50 | C: 51-70 | D: 71- 100 | E: 101 - 140 | F: 141 - 200 | G: > 200 |
|------------------------|-------------|------|--------|----------|----------|------------|--------------|--------------|----------|
| INNE | DOLNOSL | | 19 | 1 | | 1 | | 1 | |
| INNE | KUJ-POM | | 1 | 2 | | | | 1 | |
| INNE | LODZKIE | | 24 | 24 | 3 | 9 | 3 | | |
| INNE | LUBELSKIE | | 20 | 31 | | 1 | | | |
| INNE | LUBUSKIE | | 3 | | 4 | | | | |
| INNE | MALOPOL | 1 | 25 | 16 | 3 | 1 | | | |
| INNE | MAZOWIECKIE | | 37 | 64 | | 8 | | | 1 |
| INNE | OPOLSKIE | | | 2 | | | | | 3 |
| INNE | PODKARP | | 11 | 2 | 2 | 4 | | | |
| INNE | PODLASKIE | | 10 | 2 | | 1 | 2 | | 1 |
| INNE | POMORSKIE | | 7 | 3 | 2 | | | | 2 |
| INNE | SLASKIE | | 15 | 3 | 1 | | 1 | | |
| INNE | SWIETOKRZ | | 7 | 13 | | 1 | 1 | | |
| INNE | WARM-MAZ | | 8 | 2 | 2 | 1 | | | |
| INNE | WIELKOPOL | | 15 | 4 | 1 | 2 | 1 | | 1 |
| INNE | ZACHPOM | | 5 | 1 | | | 1 | | |
| INNE Suma | | 1 | 207 | 170 | 18 | 29 | 9 | 2 | 8 |
| JOHN DEERE | DOLNOSL | | 1 | 4 | 1 | 7 | 7 | 23 | 22 |
| JOHN DEERE | KUJ-POM | | 1 | 3 | | 14 | 9 | 66 | 57 |
| JOHN DEERE | LODZKIE | | | 1 | 2 | 10 | 23 | 29 | 10 |
| JOHN DEERE | LUBELSKIE | | | 1 | 5 | 10 | 13 | 46 | 17 |
| JOHN DEERE | LUBUSKIE | | | | | | 4 | 3 | 5 |
| JOHN DEERE | MALOPOL | | 2 | 2 | 5 | 6 | 8 | 6 | 4 |
| JOHN DEERE | MAZOWIECKIE | | 2 | 3 | 2 | 20 | 25 | 26 | 4 |
| JOHN DEERE | OPOLSKIE | | | 2 | | | 5 | 15 | 7 |
| JOHN DEERE | PODKARP | | | 1 | | 3 | 4 | 32 | 19 |
| JOHN DEERE | PODLASKIE | | | 2 | 1 | 8 | 15 | 14 | 10 |
| JOHN DEERE | POMORSKIE | | 1 | 4 | 1 | 6 | 7 | 22 | 12 |
| JOHN DEERE | SLASKIE | | 2 | 3 | | 2 | 5 | 15 | 5 |
| JOHN DEERE | SWIETOKRZ | | | 2 | 3 | 2 | 4 | 7 | |
| JOHN DEERE | WARM-MAZ | | 2 | | | 6 | 12 | 55 | 39 |
| JOHN DEERE | WIELKOPOL | | 1 | 2 | 1 | 9 | 24 | 63 | 41 |
| JOHN DEERE | ZACHPOM | | | | 1 | | 2 | 7 | 14 |
| JOHN DEERE Suma | | 0 | 12 | 30 | 22 | 103 | 167 | 429 | 266 |
| KUBOTA | DOLNOSL | | 6 | 3 | | 6 | 6 | 10 | |
| KUBOTA | KUJ-POM | | 4 | 7 | 2 | 5 | 3 | 5 | |
| KUBOTA | LODZKIE | | 14 | 10 | 4 | 12 | 7 | 3 | |
| KUBOTA | LUBELSKIE | | 23 | 14 | 6 | 12 | 6 | 15 | |
| KUBOTA | LUBUSKIE | | 3 | | 1 | 1 | 1 | 2 | |
| KUBOTA | MALOPOL | | 21 | 16 | 7 | 13 | 1 | 2 | |
| KUBOTA | MAZOWIECKIE | | 32 | 47 | 8 | 32 | 12 | 26 | |
| KUBOTA | OPOLSKIE | | 4 | 6 | 1 | | 1 | 1 | |
| KUBOTA | PODKARP | | 3 | 6 | 1 | 1 | 2 | | |
| KUBOTA | PODLASKIE | | 5 | 7 | | 5 | 9 | 9 | |
| KUBOTA | POMORSKIE | | 7 | 5 | 2 | 4 | | 2 | |
| KUBOTA | SLASKIE | | 16 | 4 | 3 | 3 | 3 | 3 | |
| KUBOTA | SWIETOKRZ | | 2 | 7 | 3 | 6 | 2 | 4 | |
| KUBOTA | WARM-MAZ | | 8 | 5 | 2 | 2 | 8 | 10 | |
| KUBOTA | WIELKOPOL | | 11 | 9 | 6 | 11 | 12 | 20 | |
| KUBOTA | ZACHPOM | | 5 | 4 | | 5 | 3 | 6 | |
| KUBOTA Suma | | 0 | 164 | 150 | 46 | 118 | 76 | 118 | 0 |
| LANDINI | DOLNOSL | | | | | | | | 1 |
| LANDINI | KUJ-POM | | | | 1 | | | | |
| LANDINI | LODZKIE | | | 1 | 3 | 12 | 1 | | |
| LANDINI | LUBELSKIE | | | | 2 | 5 | | | |
| LANDINI | MALOPOL | | | 1 | 2 | 2 | | | |
| LANDINI | MAZOWIECKIE | | | | 10 | 8 | 1 | | |
| LANDINI | POMORSKIE | | | | | | 1 | | |
| LANDINI | SWIETOKRZ | | | | | 1 | | | |
| LANDINI | WARM-MAZ | | | | | 1 | | | |
| LANDINI | WIELKOPOL | | | | 1 | | | | |
| LANDINI Suma | | 0 | 0 | 2 | 19 | 29 | 3 | 0 | 1 |
| LOVOL | KUJ-POM | | 2 | 1 | | | | | |
| LOVOL | LODZKIE | | 1 | 8 | | | | | |
| LOVOL | LUBELSKIE | | 1 | 21 | | | | | |
| LOVOL | MALOPOL | | 1 | 26 | | | | | |
| LOVOL | MAZOWIECKIE | | 1 | 35 | | | | | |
| LOVOL | PODKARP | | 1 | 9 | | | | | |
| LOVOL | PODLASKIE | | | 1 | | | | | |
| LOVOL | POMORSKIE | | | 2 | | | | | |
| LOVOL | SLASKIE | | | 4 | | | | | |
| LOVOL | SWIETOKRZ | | 1 | 20 | | | | | |
| LOVOL | WARM-MAZ | | | 3 | | | | | |
| LOVOL | WIELKOPOL | | | 3 | 1 | 1 | | | |
| LOVOL Suma | | 0 | 8 | 133 | 1 | 1 | 0 | 0 | 0 |

| TOPMARKA | WOJEWODZTWO | BRAK | A: <30 | B: 30-50 | C: 51-70 | D: 71- 100 | E: 101 - 140 | F: 141 - 200 | G: > 200 |
|-----------------------------|-------------|------|--------|----------|----------|------------|--------------|--------------|----------|
| MASSEY FERGUSON | DOLNOSL | | | | | 3 | 6 | 3 | 12 |
| MASSEY FERGUSON | KUJ-POM | | | | | | 11 | 11 | 7 |
| MASSEY FERGUSON | LODZKIE | | | | | 6 | 25 | 8 | 8 |
| MASSEY FERGUSON | LUBELSKIE | | | | 1 | 16 | 30 | 18 | 14 |
| MASSEY FERGUSON | LUBUSKIE | | | | | 1 | 1 | 2 | 3 |
| MASSEY FERGUSON | MALOPOL | | | | | 3 | 28 | 5 | 3 |
| MASSEY FERGUSON | MAZOWIECKIE | | | | | 22 | 28 | 16 | 20 |
| MASSEY FERGUSON | OPOLSKIE | | | | | 3 | 5 | 4 | 5 |
| MASSEY FERGUSON | PODKARP | | | | | 2 | 6 | 3 | 2 |
| MASSEY FERGUSON | PODLASKIE | | | | | 3 | 26 | 9 | 8 |
| MASSEY FERGUSON | POMORSKIE | | | | | 4 | 10 | 5 | 7 |
| MASSEY FERGUSON | SLASKIE | | | | | 2 | 6 | 5 | 2 |
| MASSEY FERGUSON | SWIETOKRZ | | | | | 20 | 16 | 4 | 4 |
| MASSEY FERGUSON | WARM-MAZ | | | | | 3 | 12 | 11 | 10 |
| MASSEY FERGUSON | WIELKOPOL | | | 1 | | 7 | 27 | 17 | 20 |
| MASSEY FERGUSON | ZACHPOM | | | | | | | 2 | 4 |
| MASSEY FERGUSON Suma | | 0 | 0 | 1 | 1 | 95 | 237 | 123 | 129 |
| MC CORMICK | DOLNOSL | | | | 2 | 4 | | | 2 |
| MC CORMICK | KUJ-POM | | | | | 3 | 1 | | |
| MC CORMICK | LODZKIE | | | 3 | | 2 | 1 | 1 | |
| MC CORMICK | LUBELSKIE | | | | 2 | 8 | | | |
| MC CORMICK | MAZOWIECKIE | | | 2 | | 7 | 1 | 1 | |
| MC CORMICK | PODKARP | | | | | 3 | 2 | | 2 |
| MC CORMICK | PODLASKIE | | | | | 1 | | | |
| MC CORMICK | POMORSKIE | | | | | 1 | | | |
| MC CORMICK | SLASKIE | | | | | 1 | | | |
| MC CORMICK | SWIETOKRZ | | | | 1 | 4 | | | |
| MC CORMICK | WARM-MAZ | | | | | 1 | | | 1 |
| MC CORMICK | WIELKOPOL | | | | | | 1 | 2 | 2 |
| MC CORMICK Suma | | 0 | 0 | 5 | 5 | 35 | 6 | 4 | 7 |
| NEW HOLLAND | DOLNOSL | | | | 1 | 5 | 15 | 23 | 17 |
| NEW HOLLAND | KUJ-POM | | | | 8 | 21 | 16 | 54 | 17 |
| NEW HOLLAND | LODZKIE | | | 2 | 19 | 41 | 34 | 37 | 10 |
| NEW HOLLAND | LUBELSKIE | | 2 | 9 | 28 | 67 | 17 | 41 | 5 |
| NEW HOLLAND | LUBUSKIE | | | | | 1 | 4 | 5 | 1 |
| NEW HOLLAND | MALOPOL | | | 2 | 28 | 32 | 4 | 9 | 2 |
| NEW HOLLAND | MAZOWIECKIE | | | 5 | 37 | 71 | 42 | 65 | 12 |
| NEW HOLLAND | OPOLSKIE | | | | 1 | 6 | 2 | 11 | 6 |
| NEW HOLLAND | PODKARP | | | 1 | 2 | 6 | 5 | 4 | 1 |
| NEW HOLLAND | PODLASKIE | | 1 | | 2 | 22 | 23 | 34 | 11 |
| NEW HOLLAND | POMORSKIE | | 1 | | | 6 | 11 | 3 | 10 |
| NEW HOLLAND | SLASKIE | | | | 2 | 9 | 7 | 4 | 1 |
| NEW HOLLAND | SWIETOKRZ | | | 4 | 11 | 14 | 7 | 5 | |
| NEW HOLLAND | WARM-MAZ | | | | 2 | 9 | 9 | 20 | 3 |
| NEW HOLLAND | WIELKOPOL | | | | 8 | 47 | 32 | 43 | 13 |
| NEW HOLLAND | ZACHPOM | | | | 2 | 7 | 10 | 22 | 10 |
| NEW HOLLAND Suma | | 0 | 4 | 23 | 151 | 364 | 238 | 380 | 119 |
| STEYR | DOLNOSL | | | | | | | 4 | |
| STEYR | KUJ-POM | | | | | 3 | 1 | 6 | 4 |
| STEYR | LODZKIE | | | | 1 | 13 | 6 | 6 | 1 |
| STEYR | LUBELSKIE | | | | 6 | 13 | 8 | 13 | 7 |
| STEYR | MALOPOL | | | | 1 | 5 | 4 | 2 | |
| STEYR | MAZOWIECKIE | | | | | 6 | 3 | 12 | 8 |
| STEYR | OPOLSKIE | | | | | | 1 | 6 | 9 |
| STEYR | PODKARP | | | | | 4 | 6 | 3 | 1 |
| STEYR | PODLASKIE | | | | | | 1 | 6 | 3 |
| STEYR | POMORSKIE | | | | | 3 | 1 | 5 | 2 |
| STEYR | SLASKIE | | | | 1 | | | 3 | |
| STEYR | SWIETOKRZ | | | | 3 | 2 | 1 | 8 | |
| STEYR | WARM-MAZ | | | | | | 1 | 11 | 11 |
| STEYR | WIELKOPOL | | | | | 3 | 3 | 13 | 6 |
| STEYR | ZACHPOM | | | | | | | | 1 |
| STEYR Suma | | 0 | 0 | 0 | 12 | 52 | 36 | 98 | 53 |

| TOPMARKA | WOJEWODZTWO | BRAK | A: <30 | B: 30-50 | C: 51-70 | D: 71- 100 | E: 101 - 140 | F: 141 - 200 | G: > 200 |
|--------------------|-------------|------|--------|----------|----------|------------|--------------|--------------|----------|
| TYM | DOLNOSL | | | 3 | 1 | | | | |
| TYM | KUJ-POM | | 1 | | 2 | | | | |
| TYM | LODZKIE | | 1 | 4 | 1 | | | | |
| TYM | LUBELSKIE | | 2 | 4 | 2 | | 1 | | |
| TYM | MALOPOL | | 3 | 1 | 1 | | | | |
| TYM | MAZOWIECKIE | | | 1 | 3 | | 4 | | |
| TYM | PODKARP | | 1 | 2 | 2 | | | | |
| TYM | PODLASKIE | | | | | 1 | | | |
| TYM | POMORSKIE | | 1 | | 1 | | | | |
| TYM | SLASKIE | | 1 | 1 | 2 | | | | |
| TYM | SWIETOKRZ | | | 2 | | | | | |
| TYM | WARM-MAZ | | | | 2 | | | | |
| TYM | WIELKOPOL | | 1 | | 2 | 1 | | | |
| TYM Suma | | 0 | 11 | 18 | 19 | 2 | 5 | 0 | 0 |
| URSUS | DOLNOSL | | | | | 1 | 1 | 1 | |
| URSUS | KUJ-POM | | | | 1 | | | 1 | |
| URSUS | LODZKIE | | | | 1 | 1 | | | |
| URSUS | LUBELSKIE | 1 | | | 1 | | | 1 | |
| URSUS | MALOPOL | | | 1 | 1 | | | 1 | |
| URSUS | MAZOWIECKIE | | | | | 2 | 2 | | |
| URSUS | OPOLSKIE | | | 1 | | | | | |
| URSUS | PODKARP | | | 1 | | | 2 | 1 | |
| URSUS | PODLASKIE | | | | | 1 | | | |
| URSUS | SLASKIE | | | | | | | 1 | |
| URSUS | SWIETOKRZ | | | 3 | 2 | | | | |
| URSUS | WIELKOPOL | | | 1 | 1 | | 1 | 1 | |
| URSUS Suma | | 1 | 0 | 7 | 7 | 5 | 6 | 7 | 0 |
| VALTRA | DOLNOSL | | | | | | 2 | 4 | 11 |
| VALTRA | KUJ-POM | | | | | 1 | 9 | 6 | 16 |
| VALTRA | LODZKIE | | | | | | 3 | 7 | 9 |
| VALTRA | LUBELSKIE | | | | | | 6 | 11 | 13 |
| VALTRA | LUBUSKIE | | | | | | | 7 | 9 |
| VALTRA | MALOPOL | | | | | 1 | 7 | 6 | 4 |
| VALTRA | MAZOWIECKIE | | | | | | 8 | 14 | 24 |
| VALTRA | OPOLSKIE | | | | | | 1 | 1 | 5 |
| VALTRA | PODKARP | | | | | | 1 | 1 | 4 |
| VALTRA | PODLASKIE | | | | | 1 | 9 | 9 | 16 |
| VALTRA | POMORSKIE | | | | | | 1 | 6 | 7 |
| VALTRA | SLASKIE | | | | | | 5 | 7 | 7 |
| VALTRA | SWIETOKRZ | | | | | 1 | 4 | 2 | 5 |
| VALTRA | WARM-MAZ | | | | | | 1 | 5 | 7 |
| VALTRA | WIELKOPOL | | | | | 1 | 7 | 15 | 15 |
| VALTRA | ZACHPOM | | | | | | 3 | 4 | 9 |
| VALTRA Suma | | 0 | 0 | 0 | 0 | 5 | 67 | 105 | 161 |
| ZETOR | DOLNOSL | | 1 | | | 6 | 8 | 1 | |
| ZETOR | KUJ-POM | | | | | 15 | 13 | 1 | |
| ZETOR | LODZKIE | | | | | 12 | 16 | 3 | |
| ZETOR | LUBELSKIE | | | | | 15 | 11 | 1 | |
| ZETOR | LUBUSKIE | | | | | 3 | 3 | | |
| ZETOR | MALOPOL | | 1 | | | 26 | 14 | | |
| ZETOR | MAZOWIECKIE | | | | | 48 | 19 | 3 | |
| ZETOR | OPOLSKIE | | | | | 7 | 4 | | |
| ZETOR | PODKARP | | | | | 17 | 7 | 1 | |
| ZETOR | PODLASKIE | | | | | 12 | 9 | 1 | |
| ZETOR | POMORSKIE | | | | | 9 | 6 | 2 | |
| ZETOR | SLASKIE | | 1 | | | 16 | 8 | | |
| ZETOR | SWIETOKRZ | | | | | 15 | 4 | 1 | |
| ZETOR | WARM-MAZ | | | | | 19 | 3 | | |
| ZETOR | WIELKOPOL | | 1 | | | 47 | 17 | 3 | |
| ZETOR | ZACHPOM | | | | | 9 | 5 | 1 | |
| ZETOR Suma | | 0 | 4 | 0 | 0 | 276 | 147 | 18 | 0 |

Topowe modele

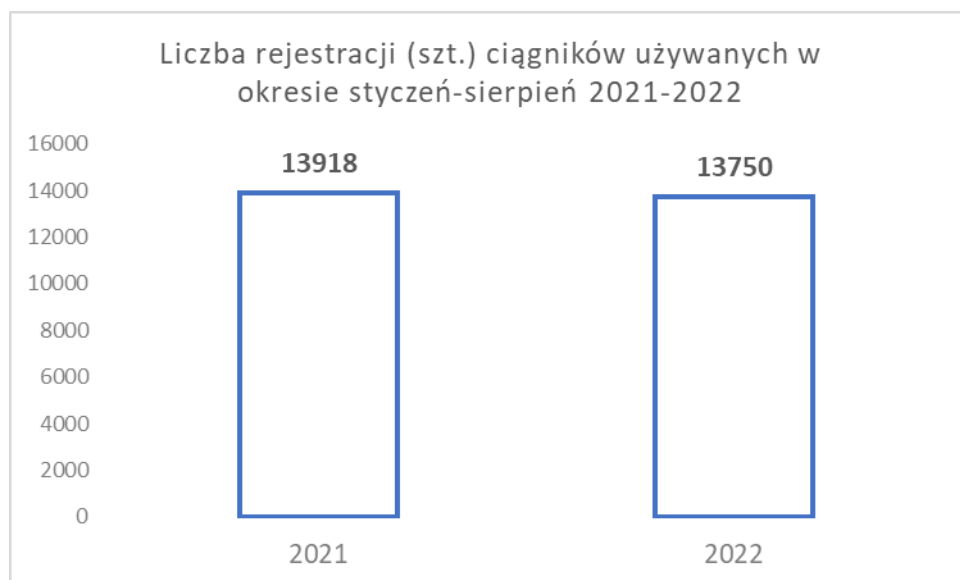
Po ośmiu miesiącach br. na szczycie tabeli znajduje się model John Deere 6155M, którego zarejestrowano 245 szt. Case IH model Puma 150 zajmuje drugie miejsce z ilością 153 szt. John Deere z modelem 6120M zajmuje trzecią pozycję – zarejestrowano 129 szt. ciągników tego modelu. Massey Ferguson MF 5709M awansuje na czwartą pozycję w ilością 129 szt. Zetor Major CL 80 jest na piątym miejscu, zarejestrowano 111 szt. tych ciągników. Kolejną pozycję z ilością 102 szt. zajmuje model Maxxum 125 marki Case IH.

| LP | MARKA | MODEL | ILOŚĆ |
|----|--------------------------|--------------------|-------|
| 1 | JOHN DEERE | 6155M | 245 |
| 2 | CASE IH | PUMA 150 | 153 |
| 3 | JOHN DEERE | 6120M | 129 |
| 4 | MASSEY FERGUSON | MF 5709M | 129 |
| 5 | ZETOR | MAJOR CL 80 | 111 |
| 6 | CASE IH | MAXXUM 125 | 102 |
| 7 | DEUTZ FAHR | 5105 | 97 |
| 8 | MASSEY FERGUSON | MF 7715 S | 91 |
| 9 | FARMTRAC TRACTORS EUROPE | 26 4WD | 90 |
| 10 | NEW HOLLAND | T4.75 | 89 |
| 11 | ZETOR | PROXIMA CL 100 | 88 |
| 12 | NEW HOLLAND | T4.75S | 84 |
| 13 | FARMTRAC TRACTORS EUROPE | FARMTRAC 6050E | 77 |
| 14 | VALTRA | T175E | 77 |
| 15 | LOVOL | M504 | 74 |
| 16 | JOHN DEERE | 6090M | 71 |
| 17 | FARMTRAC TRACTORS EUROPE | FARMTRAC 555 DTC V | 67 |
| 18 | JOHN DEERE | 6195M | 67 |
| 19 | NEW HOLLAND | T6.160 DC | 66 |
| 20 | CASE IH | PUMA 200 | 65 |
| 21 | JOHN DEERE | 6130M | 63 |
| 22 | DEUTZ FAHR | 5080 D KEYLINE | 62 |
| 23 | DEUTZ FAHR | 5080 DS | 62 |
| 24 | CASE IH | FARMALL 110C | 59 |
| 25 | DEUTZ FAHR | 5125 | 58 |
| 26 | NEW HOLLAND | T5.110 | 58 |
| 27 | NEW HOLLAND | T6.160 | 58 |
| 28 | NEW HOLLAND | T6.180 DC | 57 |
| 29 | NEW HOLLAND | T7.165 | 57 |
| 30 | VALTRA | T145 | 56 |
| 31 | STEYR | 4125 PROFI | 53 |
| 32 | NEW HOLLAND | T5.100 | 49 |
| 33 | DEUTZ FAHR | 5095 | 48 |
| 34 | KUBOTA | M5112 | 48 |
| 35 | CLAAS | ARION 630 | 46 |
| 36 | CLAAS | ARION 430 | 45 |
| 37 | JOHN DEERE | 6175M | 45 |
| 38 | KUBOTA | M4073 | 45 |
| 39 | NEW HOLLAND | T5.110 DC | 45 |
| 40 | ZETOR | PROXIMA CL 110 | 44 |
| 41 | CASE IH | FARMALL 95A | 43 |
| 42 | LOVOL | LOVOL M354 | 43 |
| 43 | ZETOR | PROXIMA CL 90 | 43 |
| 44 | MASSEY FERGUSON | MF 4708M | 42 |
| 45 | SOLIS | SOLIS 26 4WD | 42 |
| 46 | CASE IH | FARMALL 75A | 41 |
| 47 | KUBOTA | L2-522 | 41 |
| 48 | STEYR | KOMPAKT 4090 | 41 |
| 49 | CLAAS | ARION 610 | 39 |
| 50 | DEUTZ FAHR | 6165 AGROTRON | 39 |

| LP | MARKA | MODEL | ILOŚĆ |
|-----|--------------------------|------------------|-------|
| 51 | KUBOTA | L1-382 | 38 |
| 52 | NEW HOLLAND | T5.90 | 38 |
| 53 | NEW HOLLAND | T6.145 | 38 |
| 54 | KUBOTA | B1241 | 37 |
| 55 | MASSEY FERGUSON | MF 7718 S | 37 |
| 56 | JOHN DEERE | 6250R | 36 |
| 57 | DEUTZ FAHR | 5115 | 35 |
| 58 | FARMTRAC TRACTORS EUROPE | FARMTRAC 26 4WD | 35 |
| 59 | NEW HOLLAND | T5.120 | 35 |
| 60 | NEW HOLLAND | TD5.85 | 35 |
| 61 | KUBOTA | B2231 | 34 |
| 62 | MASSEY FERGUSON | MF 5710M | 34 |
| 63 | NEW HOLLAND | T6.145 DC | 34 |
| 64 | SOLIS | SOLIS 26 4WD 9+9 | 34 |
| 65 | CLAAS | AXION 800 | 33 |
| 66 | NEW HOLLAND | T5.120 DC | 33 |
| 67 | KUBOTA | M5072N | 32 |
| 68 | KUBOTA | M5092 | 32 |
| 69 | STEYR | 6145 PROFI | 32 |
| 70 | VALTRA | G105 | 32 |
| 71 | MASSEY FERGUSON | MF 5S.105 | 31 |
| 72 | NEW HOLLAND | T4.65 | 31 |
| 73 | CASE IH | FARMALL 90C | 30 |
| 74 | DEUTZ FAHR | 3060 | 30 |
| 75 | KUBOTA | L1-452 | 30 |
| 76 | KUBOTA | L1-522 | 30 |
| 77 | NEW HOLLAND | TD5.105 | 29 |
| 78 | DEUTZ FAHR | 6115C | 28 |
| 79 | VALTRA | N135 | 28 |
| 80 | KUBOTA | B2261 | 26 |
| 81 | DEUTZ FAHR | AGROPLUS 70 F | 25 |
| 82 | FARMTRAC TRACTORS EUROPE | FARMTRAC 680 DTN | 25 |
| 83 | JOHN DEERE | 5090M | 25 |
| 84 | JOHN DEERE | 6100M | 25 |
| 85 | VALTRA | T195 | 25 |
| 86 | ZETOR | PROXIMA HS 120 | 25 |
| 87 | CASE IH | OPTUM 270 CVX | 24 |
| 88 | CLAAS | ARION 450 | 24 |
| 89 | FARMTRAC TRACTORS EUROPE | FARMTRAC 675 DTN | 24 |
| 90 | JOHN DEERE | 6155R | 24 |
| 91 | NEW HOLLAND | T4.55S | 24 |
| 92 | CLAAS | ARION 440 | 23 |
| 93 | NEW HOLLAND | T4.65S | 23 |
| 94 | SOLIS | 50 2WD | 23 |
| 95 | VALTRA | T235 | 23 |
| 96 | FENDT | FENDT 312 VARIO | 22 |
| 97 | JOHN DEERE | 6215R | 22 |
| 98 | JOHN DEERE | 8R410 | 22 |
| 99 | MASSEY FERGUSON | MF 8730 | 22 |
| 100 | NEW HOLLAND | BOOMER 50 | 22 |

Rynek ciągników używanych

Na rynku wtórnym po ośmiu miesiącach 2022 roku notujemy 13 750 szt. ciągników używanych. To o 168 szt. mniej niż w tym samym okresie 2021 roku. Zatem mówimy o spadku o 1,2 %.



Liderem rynku wtórnego w okresie styczeń-sierpień br. jest marka John Deere. Zarejestrowano 2006 szt. ciągników używanych tej marki. John Deere notuje 14,6% udziałów w rynku używanych ciągników i jest liderem w trzech kategoriach wiekowych: 3-5, 6-10 i 11-20 lat. W najstarszej kategorii, powyżej 20 lat liderem jest marka Ursus z udziałami (w tej kategorii wiekowej) na poziomie 17,5%.

| TOPMARKA | > 20 LAT | udział % | 11 - 20 LAT | udział % | 6 - 10 LAT | udział % | 3 - 5 LAT | udział % | SUMA | udział % |
|--------------------------|----------|----------|-------------|----------|------------|----------|-----------|----------|-------|----------|
| ARBOS | | | | | | | 36 | 12,3% | 36 | 0,3% |
| BELARUS | 84 | 1,0% | 9 | 0,2% | 1 | 0,1% | 6 | 2,0% | 100 | 0,7% |
| CASE IH | 652 | 8,1% | 299 | 7,2% | 71 | 5,7% | 7 | 2,4% | 1029 | 7,5% |
| CLAAS | 1 | 0,0% | 470 | 11,3% | 148 | 11,9% | 41 | 14,0% | 660 | 4,8% |
| DEUTZ FAHR | 370 | 4,6% | 206 | 5,0% | 70 | 5,6% | 11 | 3,8% | 657 | 4,8% |
| FARMTRAC TRACTORS EUROPE | | | 2 | 0,0% | 1 | 0,1% | 2 | 0,7% | 5 | 0,0% |
| FENDT | 387 | 4,8% | 469 | 11,3% | 231 | 18,6% | 40 | 13,7% | 1127 | 8,2% |
| INNE | 1079 | 13,4% | 221 | 5,3% | 61 | 4,9% | 25 | 8,5% | 1386 | 10,1% |
| JOHN DEERE | 713 | 8,8% | 949 | 22,9% | 293 | 23,6% | 51 | 17,4% | 2006 | 14,6% |
| KUBOTA | 10 | 0,1% | 26 | 0,6% | 30 | 2,4% | 21 | 7,2% | 87 | 0,6% |
| LANDINI | 123 | 1,5% | 50 | 1,2% | 4 | 0,3% | | | 177 | 1,3% |
| LOVOL | | | 1 | 0,0% | | | 1 | 0,3% | 2 | 0,0% |
| MASSEY FERGUSON | 1103 | 13,7% | 437 | 10,5% | 121 | 9,7% | 19 | 6,5% | 1680 | 12,2% |
| MC CORMICK | 12 | 0,1% | 131 | 3,2% | 18 | 1,4% | 3 | 1,0% | 164 | 1,2% |
| NEW HOLLAND | 200 | 2,5% | 394 | 9,5% | 118 | 9,5% | 11 | 3,8% | 723 | 5,3% |
| RENAULT | 961 | 11,9% | 233 | 5,6% | | | | | 1194 | 8,7% |
| STEYR | 54 | 0,7% | 6 | 0,1% | 2 | 0,2% | 2 | 0,7% | 64 | 0,5% |
| TYM | | | 1 | 0,0% | 3 | 0,2% | | | 4 | 0,0% |
| URSUS | 1411 | 17,5% | 3 | 0,1% | 1 | 0,1% | 1 | 0,3% | 1416 | 10,3% |
| VALTRA | 18 | 0,2% | 169 | 4,1% | 48 | 3,9% | 6 | 2,0% | 241 | 1,8% |
| ZETOR | 884 | 11,0% | 75 | 1,8% | 23 | 1,8% | 10 | 3,4% | 992 | 7,2% |
| SUMA | 8062 | | 4151 | | 1244 | | 293 | | 13750 | |

Definicje i metodologia:

Ciągnik nowy definiowany jest jako ciągnik po raz pierwszy zarejestrowany i wyprodukowany w roku bieżącym lub roku bieżącym -1 lub roku bieżącym -2. Oznacza to, że ciągniki nowe dla np. listopada 2020 są to ciągniki po raz pierwszy zarejestrowane i wyprodukowane w roku 2020 lub w 2019 lub w 2018.

Kategorie mocy – dane otrzymywane z CEPiK przedstawiają moc ciągników w kilowatach (kW). Dla potrzeb raportu przeliczane są na konie mechaniczne (KM) wg poniższej tabeli:

| kW | | KM | | przedział w raporcie |
|---------|---------|---------|---------|----------------------|
| 0,000 | 22,064 | 0,000 | 29,998 | A: <30 |
| 22,065 | 37,510 | 30,000 | 50,999 | B: 30-50 |
| 37,511 | 52,220 | 51,000 | 70,999 | C: 51-70 |
| 52,221 | 74,285 | 71,000 | 100,999 | D: 71-100 |
| 74,286 | 103,705 | 101,000 | 140,999 | E: 101-140 |
| 103,705 | 147,099 | 141,000 | 199,998 | F: 141-200 |
| 141,100 | | 200,000 | | G: >200 |



POLSKA IZBA GOSPODARCZA
MASZYN I URZĄDZEŃ ROLNICZYCH