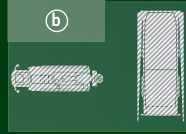
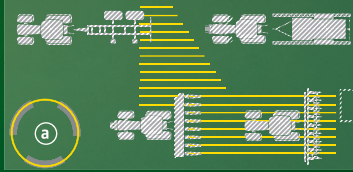


BOOTH PLAN

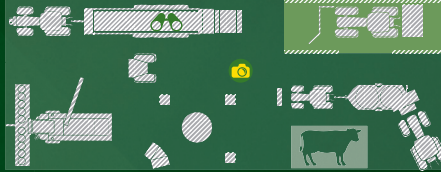
CROP CARE



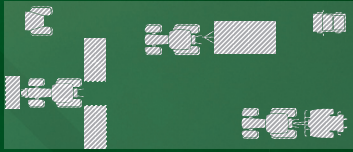
CORN: PREPARE, PLANT, NURTURE, PROTECT



CORN: HARVEST, HANDLE & FEED



GRASS: MOWING & BALING

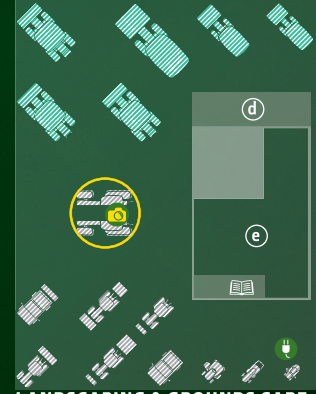


GRASS: HARVEST, HANDLE & FEED



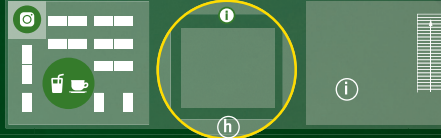
DIGITAL PRECISION AG TECHNOLOGY SOLUTIONS

LIFECYCLE SOLUTIONS & KRAMER



LANDSCAPING & GROUNDS CARE

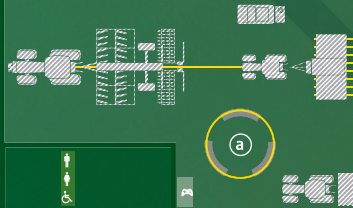
DEALER GERMANY I



DEALER GERMANY II



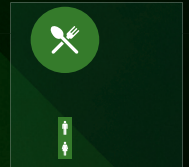
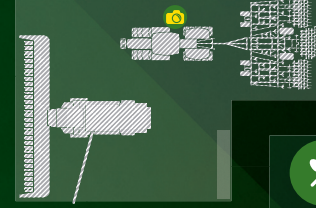
SMALL GRAINS: PREPARE, SEED, NURTURE



SMALL GRAINS: PROTECT & HARVEST



SMALL GRAINS: HARVEST & TILLAGE



- (a) Precision AG
- (b) Mazzotti / Hagie
- (c) Kramer Lounge
- (d) Kramer
- (e) Fanshop
- (f) John Deere Power Systems
- (g) John Deere Financial
- (h) Stage
- (i) Lounge
- (j) Booth Tours
- (k) Info + Recruiting
- (l) Viewing platform
- (m) Meeting area
- (n) Social media corner
- (o) Farming Simulator
- (p) Information material
- (q) Photo point

DEALER GERMANY I

- 1 | D.O.B. Landtechnik AG
- 2 | Hawart OMV Landtechnik GmbH
- 3 | Tiemann Landtechnik GmbH & Co. KG
- 4 | Kotschenreuther Forst- und Landtechnik GmbH & Co. KG
- 5 | REBO Landmaschinen GmbH
- 6 | Knoblauch Landtechnik GmbH
- 7 | S&L Connect
- 8 | Zürn GmbH & Co. KG
- 9 | Südbayerische Landtechnik GmbH

DEALER GERMANY II

- 10 | Landtechnik LVA Brandenburg GmbH
- 11 | LVD Bernard Krone GmbH
- 12 | Schwarz GmbH Landtechnik-Ökotech Vertrieb & Fischer Landmaschinen GmbH
- 13 | Josef Greving Landmaschinen e.K.
- 14 | Deppe & Stücker GmbH
- 15 | Hermann Wagener Landmaschinen
- 16 | Robert Aebi Landtechnik GmbH



JOHN DEERE

NOTHING RUNS LIKE A DEERE